

Staff Profile

Table of Contents

Staff Profile	1
Staff Notes	4
Staff News	6
Sustainable Emerson	12
Tech Spot	12
Upcoming Events	13

Mindy Hinkel

Mindy Hinkel has only been a member of the Performing Arts Department for a few months, but it is already “home” to her. As the department’s administrative assistant, Hinkel provides administrative support to 744 students, staff, and faculty. She assists in coordinating departmental events, such as the annual Performing Arts Welcome Soirée, and is the departmental contact for curricular space requests and registration questions.

Her responsibilities also include the coordination and promotion of external performance opportunities with both students and faculty through a regular electronic newsletter, the TackBoard, and call boards. She works closely with a number of departments across campus, including the Office of the Arts.

Hinkel came to Emerson from MIT, where she worked in gift planning, and Dana-Farber Cancer Institute, where she assisted researchers in cancer biology. She also has seven years of office experience in a small



to mid-cap investment banking firm and worked as a contract reconciliation analyst at Kripalu Center for Yoga and Health in western Massachusetts.

continued on next page

Staff Profile cont.

Hinkel first arrived in Massachusetts through a work-study program at Shakespeare and Company in Lenox in 1999. This theater and acting training company has strong ties to many faculty here at Emerson, bringing her full circle.

Hinkel took the position at Emerson because she is a performing artist herself, and was impressed by the hands-on experience available to Performing Arts students. She sings professionally in the King's Chapel choir in downtown Boston every Sunday. At Emerson, she has found a team of like-minded colleagues who understand the importance of collaboration and mutual respect.

Music has been a passion of Hinkel's since childhood. She played a number of instruments while growing up and received a BA in music education from Moravian College in Pennsylvania. She made the move to Boston to study with Monique Phinney in the graduate program in opera at the Boston Conservatory.

Hinkel is busy planning her fourth "Alto Extravaganza" cabaret, which is a fundraiser for the King's Chapel Concert Series. She has also recently started a new cabaret duo with her husband and fellow musician, Brett, called THE HiNKS. She has been involved in planning and performing in benefit concerts since she was 12 years old.

One of Hinkel's main non-musical hobbies is yoga; she has certifications in Embodiment yoga and yoga dance. She also enjoys pet sitting and watching movies and TV shows with apocalyptic themes, such as *The Last Ship*. A native of Danielsville, Pennsylvania, at the foot of the Blue Mountains, she and her "high school sweetheart" husband currently live in South Boston.

Staff Profile cont.

Performing Arts Department Profile

How many people work in your department?

11 staff (including 6 teaching staff), 29 full-time faculty, and 51 part-time faculty

Where is your department located?

Tufte PPC, Fifth Floor

What are your department's major functions?

To provide developing performing artists with access to a broad range of artistic and creative styles, vocabularies, and techniques, and to train them to be versatile and skilled with a wide range of tools for their craft. We encourage them to dream big and provide them with the intellectual and emotional tools to believe they can make those dreams a reality.

What population does your department work with?

We work with a wide variety of people: staff, faculty, students, prospective students and their parents, other departments across the College, and outside vendors, as well as performing arts professionals from across the world, other colleges and universities and their students, and local theater companies.

What do you think is the most interesting facet of your department's contribution to the Emerson community?

Our biggest contribution to the Emerson community is our ability to communicate and collaborate in producing a large number of projects. Also, the breadth and depth of our faculty, who are working theater artists from a thriving theater community outside of Emerson, bring a tremendous benefit to the College and its students.

Has your department recently accomplished a goal (or does it have one in the works) that may be of interest to the community?

Later this year, Emerson Stage will be co-producing *The Ware Trilogy* with the Wheelock Family Theatre and Central Square Theatre. It is a three-play cycle focusing on the life of Tuc, a Deaf boy living in Ware, Illinois, during the Great Depression and WWII. The show is our annual Theater for Young Audiences production, which includes several matinees with local elementary schools and opportunities for our Theatre Education students to put their education into practice. The show also has an ASL component, for which we're excited to interact with Emerson's Communication Sciences and Disorders program.

This marks the first time the entire play cycle has been performed in one place. To see how it all turns out, tune in at the end of February for Mother Hicks!

Staff Notes

New Faces

- Onedia Asiedu, Clinical Coordinator, Counseling and Psychological Services
- Leonard Boudreau, Trades Mechanic, Facilities Management
- Nicholas Corsano, Production Coordinator, Visual and Media Arts
- Frederik Osborne, Assistant Director, International Recruitment, Graduate Admission
- Shakena Perry, Clinical Coordinator, Center for Health and Wellness
- Petra Raposo, Assistant Manager, Circulation, Iwasaki Library
- Micah Sieber, Associate Director, Graduate Admission

Announcements

- Andy Tiedemann (Communications and Marketing) has been appointed to the Council for Advancement and Support of Education's Communications and Marketing Commission. The international commission comprises 17 leaders in higher education communications and marketing selected from colleges and universities around the world. The commission identifies and shares best practices with the profession as well as discusses evolving marketing communications trends in higher education. Members serve one three-year term.
- Anna Feder is now director of programming in the Visual and Media Arts Department.
- Paul Twist (Iwasaki Library) and his wife, Eileen Welch, celebrated their 40th wedding anniversary on September 15.



If you haven't already, please join Emerson UnCommon on Community PlanIt and start sharing your ideas to help shape the future of Emerson College! Mission 1 of the online game launched on September 22, but there's still a week left to play Mission 3—plenty of time to earn coins and rally support for your favorite community cause or submit an idea of your own. Hurry, though, as the game ends on October 6.

Emerson UnCommon brings together voices from all over the Emerson community to discuss the College's place in our lives, the community, and the world. Players can win \$3,000 in funding for Emerson community causes (including player-created causes). Register now at communityplanit.org/emersonuncommon.

Staff Notes cont.

New Faces Spotlight

Micah Sieber recently joined the Office of Graduate Admission as associate director.

His main responsibilities include recruitment travel, supervising three assistant directors, and ensuring that the faculty of the 10 graduate programs receive all of the materials they need from applicants. This includes application essays, recommendation letters, and creative portfolios.

He is also the Admission Office's liaison to the Media Art MFA program. He will be the primary admission point of contact for the program's prospective students and will support the VMA faculty.

Sieber came to Emerson from Vassar College in Poughkeepsie, New York, where he spent seven years in the undergraduate admission office.

He was interested in the position at Emerson because he is a native of Cambridge, Massachusetts, and had always admired the school. Also, he enjoyed working closely with the art, music, and dance departments at Vassar, so was interested in the College's focus on the arts and communication. He also noted the friendliness of his future colleagues.

Sieber has a BA in history from Haverford College in Philadelphia. While working at Vassar, he completed an MA in multicultural education at SUNY New Paltz.

Now that he is back in Boston, he is looking forward to rediscovering the area. He is also eager to pick up hobbies that were put to the side while he was enrolled in graduate school.

He remained engaged in one of his main hobbies, however: fine art photography. He enjoys using 4x5 and 8x10 large-format cameras and making darkroom prints.



He has been shooting large format for several years and co-taught classes in large format at Marist College while living in the Hudson Valley in New York.

Sieber recently began working with wet-plate collodion, a photographic process from the 1860s used extensively during the Civil War by photographers such as Mathew Brady. This process, which predates photographic film, uses a liquid emulsion that is coated on glass or metal plates to create an image. For him, this process is the perfect mix of history and art. He stated that although very challenging, this process can create some truly fantastic images that look like nothing else.

Staff News

Emerson College Los Angeles Welcomes New Staff

Many new staff have been hired at Emerson College Los Angeles (ELA) since it opened in January. Following is a list of all current staff.



Kevin Bright **Founding Director**

Kevin Bright '76 provides strategic vision and direction for ELA's programmatic and operational goals. His role at ELA includes bridging the Boston and LA Emerson experiences and building out ELA's offerings with students, alumni, and the community in mind. Bright's leadership role at Emerson began in 2003 when he joined the Board of Trustees after more than 30 years in network television.



Joyce Williams **Director of Business Operations**

Joyce Williams is responsible for establishing the financial business and administration infrastructure to support ELA's programmatic and strategic objectives. She works closely with Boston staff to address issues at ELA related to finance/budget, HR, payroll, facilities, technology, security, student affairs, housing, creative services, tours, and facility rental.

continued on next page

Staff News cont.



Kerri McManus
Director of Internships

Kerri McManus is the liaison between intern sites and students enrolled in the LA Program. She oversees internship faculty and the internship classes, assists with student internship orientations for the LA Program in Boston and in Los Angeles, advises students one-on-one regarding their internship search, and connects with companies who are searching for interns.



Chris Brunelle
Assistant Dean of Students

Chris Brunelle is responsible for the administration, management, strategic planning, and development of a comprehensive student life program at ELA, which includes residence life, housing, and student programming. Brunelle also serves as the Disability Services liaison and the deputy Title IX coordinator at ELA.



Jon Clayden
Director of Post-Graduate and Professional Studies

Jon Clayden assists with the development and management of courses, certificate programs, and conferences that are geared toward local alumni, members of the general public, and businesses. Current projects in development include a one-day PR seminar and weeknight courses in networking and social media marketing.

continued on next page

Staff News cont.



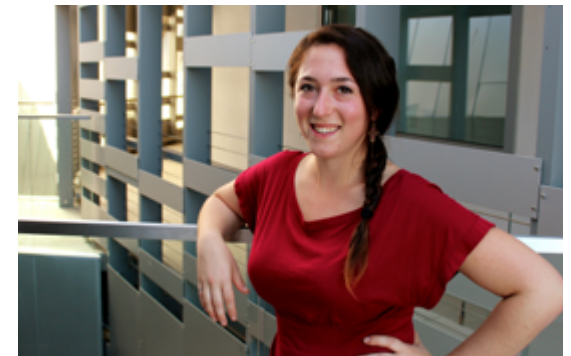
Amy Grill
Director of Creative Services

Amy Grill plans and executes panel discussions, events, and video productions, and works closely with Boston on marketing strategy and brand identity. She will oversee social media and public relations as the ELA Creative Services team grows. Grill is thrilled to be back at Emerson after having worked at Emerson in Boston as the manager of Emerson TV channels and also as faculty.



Oscar Ormaechea
Manager of Technical Operations

Oscar Ormaechea recently transferred to ELA after spending 10 years on the Boston campus. He is responsible for the management and resolution of ELA's technical issues, technical governance and quality assurance, system security, and for the management of its technical support teams. He also acts as the technical liaison between Boston and ELA.



Cara Ostrow
Special Events and Facilities Coordinator

Cara Ostrow oversees the use of ELA's facilities by external clients. She handles the booking and coordination of the spaces, and provides tours and creates event packages for local community members, local alumni, and industry professionals. Events range from community meetings with local politicians to private parties for alumni.

continued on next page

Staff News cont.



Turi Daoust
Residence Director

Turi Daoust is a live-on staff member who supervises resident assistants and serves on the on-call emergency staff rotation. She oversees move-ins and move-outs, communicates with students before they arrive, and serves as the main point of contact for student housing-related issues. She joined the ELA staff after graduating from Emerson with a Marketing Communications degree in 2011.



Rob Eckard
Assistant Residence Director

Rob Eckard serves as one of the two live-on staff. His duties range from serving as a member of the emergency response team to supervising resident assistants. He also creates social programming that allows students to strengthen their relationships with each other, explore Los Angeles culture, and gain the skills required for their post-graduate pursuits. He graduated from Emerson with a BA in Theatre Education in 2010.



Larry Caldwell
Internship Coordinator

Larry Caldwell's duties include creating and maintaining internships as well as advising half of the ELA student body about applying to internships and working at internship sites. He is an alumnus of Emerson's Creative Writing MFA program and will be celebrating his 10th year as an Emerson employee in January.

continued on next page

Staff News cont.



Valena Berke
Academic Internship Department
Administrator

Valena Berke provides academic office support to ELA's academic programs by facilitating the day-to-day operations and long-term goals of the College's undergraduate studies and internship department.



Charvelle Holder
Business Operations Coordinator

Charvelle Holder's duties include the management of space and equipment rentals for students and faculty, hiring and management of student tour guides, and answering the main phone line. She graduated from Emerson's Broadcast Journalism program in 2013 and was a participant of the LA Program in its previous iteration.



Don Carter
Director of Facilities and
Dining Services

Don Carter manages the Facilities Department, which includes Custodial, Trades, Landscaping, and the Mailroom. He also manages the general building operations, including project management and work with government regulatory agencies. Additionally, he oversees Emerson Kitchen and Sodexo catering services.

continued on next page

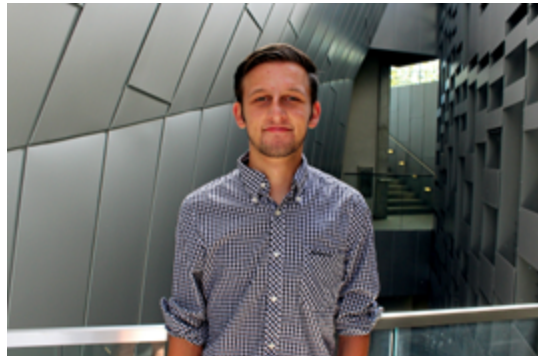
Staff News cont.



Chris De Anda

Director of Security and Fire Safety

Chris De Anda is responsible for directing, coordinating, and overseeing all activities of the on-site security staff, including all supervisory, training, and operation functions at the assigned post in accordance with the post orders and client instructions. He also maintains the building's emergency preparedness program and ensures the building is kept safe for all occupants.



Brian Pelletier

Systems Administrator

After working for two years in Emerson's Lab Operations in Boston, Brian Pelletier moved to LA, where he now acts as systems administrator for ELA. He manages the network, editing suites, classrooms, and EDC student film equipment. He graduated from Emerson with a major in Cinematography and a minor in Photography in 2012.

Additional ELA Staff

Patrick Smith

Director of Development, West Coast LA Campaign Manager

Sustainable Emerson

Updates and News

1. Emerson has made the switch to single-stream recycling. The blue bins under everyone's desks can now be used for all recyclables: paper, plastic, metal, and glass. The same goes for all blue recycling containers on campus.

2. Especially important for anyone planning catered events on campus, Emerson is now required to divert food waste from the trash stream. This means that the organizer of a catered event is responsible for making sure that any leftover food is composted. Instructions and special bags will be included with every catering order through Sodexo. For non-Sodexo orders, extra instruction cards and bags will be available.

3. Plans are coming together for the second iteration of the Campus Garden. We will likely be planting in late October. Thanks to everyone who has volunteered to host a planter box. If you are interested in hosting a planter box, please email [Eric Van Vlandren](#).

4. We encourage Community PlanIt: Emerson UnCommon players to pledge coins to the Campus Garden Expansion cause to help raise money to buy more planter boxes!

5. Please join us on Friday, October 3, at 1:00 pm in the Semel Theater for a special presentation of the updated version of *An Inconvenient Truth*, delivered by Emerson alumnus and Al Gore Climate Leader Josef Mantl.

Tech Spot

National Cyber Security Awareness Month

Did you know that October is National Cyber Security Awareness Month? Emerson IT is participating in the Stop.Think.Connect. Campaign, "a national public awareness campaign aimed at increasing the understanding of cyber threats and empowering the American public to be safer and more secure online." We encourage the Emerson community to read more about cyber security, explore the resources provided by the campaign, and get involved! Visit dhs.gov/stopthinkconnect.

Upcoming Events

October 1–12

Times vary

Traces

ArtsEmerson Production

October 2–5

Times vary

Anything to Declare

Emerson Stage Production

October 7

4:00 pm

Screening of Michael Radford's film

Nineteen Eighty-Four

Adventures in Ethics Lecture Series

October 7

7:00 pm

Kill Your Darlings

Bright Lights Screening

October 8

7:00 pm

Coexist Film Screening

Sponsored by VMA and the Institute

October 9–12

Times vary

Middletown

Emerson Stage Production

October 15–23

Times vary

King Lear

ArtsEmerson Production

October 21–26

Times vary

The Magic Flute

ArtsEmerson Production

October 28

7:00 pm

Kisses to the Children

Bright Lights Screening with

WLP and the Onassis Foundation

Staff Forums

October 2

2:00–4:00 pm

Semel Theater

November 19

2:00–4:00 pm

Bill Bordy Theater

people@Emerson

Published monthly by the
Office of Communications and
Marketing

Executive Editor

Andy Tiedemann

Editor

Nancy Howell

Designers

Chuck Dunham

Liliana Ballesteros

Advisory Group

Blaine Butler

Jill Davidson

Sharon Duffy

Gerri McGowan

Diana Potter

Allegra Sandak

Mia Seidner

Chris Serwacki

Mengfong Tan

Send news or suggestions to
people@emerson.edu.



EMERSON COLLEGE